

Harford County 2018 Continuum of Care Competition Notice of Funding Availability



Harford County Office of Community & Economic
Development
FFY2018 CoC NOFA
July 2, 2018

Barry Glassman
Harford County Executive

Leonard R. Parrish
Director, Community &
Economic Development



Overview

- ❖ Applicant Eligibility
- ❖ HUD's Homeless Policy and Program Priorities
- ❖ New Projects
- ❖ Renewal Projects
- ❖ Application Review Information
- ❖ Timeline





Program Description

- ❖ CoC Program is designed to promote a community-wide commitment to the goal of ending homelessness
- ❖ Provides funding for these efforts by non-profits, States, local governments
- ❖ Focus on quickly re-house families, individuals, persons fleeing DV and youth



Program Description (cont'd)

- ❖ Minimize the trauma and dislocation caused by homelessness
- ❖ Promote access to and effective utilization of mainstream programs
- ❖ Optimize self-sufficiency among those experiencing homelessness
- ❖ Governed by 24 CFR part 578, Federal Register



Who are eligible applicants?

❖ 2 Types of Applicants

1. Collaborative Applicant: Harford County, MD
2. Project Applicants:
 - a. non-profit organizations
 - b. States
 - c. Local governments
 - d. instrumentalities of State & local governments

See 24 CFR part 578 for complete eligibility requirements and page 20-28, Section V. of the NOFA



HUD Policies & Priorities





Ending Homelessness For All Persons



- ❖ Identify, Engage and Effectively Serve All Persons Experiencing Homelessness
 - Comprehensive outreach strategy to identify and continuously engage all unsheltered persons
 - Use local data to determine the characteristics of those with highest needs and longest periods of homelessness to develop housing and supportive services tailored to their needs
 - Consider the reallocation process to create new projects that improve overall performance better response to needs



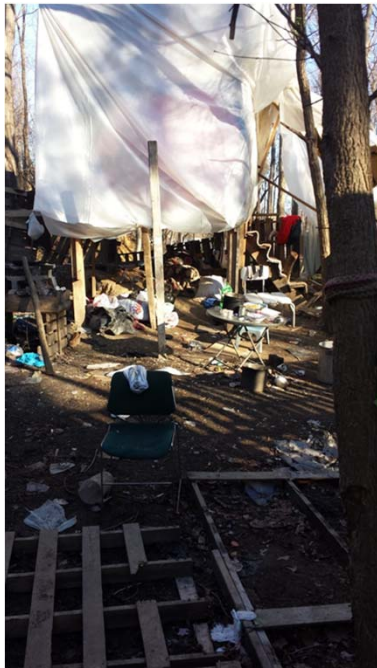
Create a Systemic Response to Homelessness

Supports that ensure homeless assistance is well coordinated, well managed, inclusive, transparent and achieves positive outcomes.

- ❖ Measure System Performance to Assess the Overall Impact of a COC's Homeless Assistance Efforts
 - Average length of homeless episodes
 - Rates of return to homelessness
 - Rates of exit to permanent housing destinations
 - First time homelessness
 - Permanent Housing Retention
 - Employment & Income Growth



Create a Systemic Response to Homelessness



- Effectively Utilize the Coordinated Entry Process
 - Easier access to housing & interventions- “Screen In”
 - Prioritize persons with longest histories of homelessness & most extensive needs
 - Lower barriers to entering programs or receiving assistance
 - Ensure housing as quickly as possible



Create a Systemic Response to Homelessness



- ❖ Promote Participant Choice
 - Choice in interventions
 - Choice of housing programs
 - Choice of support services
 - Choice in where to live



Create a Systemic Response to Homelessness



- ❖ Plan as a System
- Coordination between, homeless assistance, mainstream benefits and housing, service providers (SOAR, benefits, HCV, VASH, DSS, employment)
- Focus on receiving assistance as quickly as possible
- Goal is obtaining or retaining housing
- Eliminate duplication of services
- Make assistance open, inclusive and transparent



Strategically Allocate & Use Resources

Using cost, performance and outcome data to improve how resources are utilized to end homelessness

- ❖ Comprehensive Review of Project Quality, Performance and Cost Effectiveness
- Consider effectiveness in serving people experiencing homelessness, including cost effectiveness
- Are projects maximizing the use of mainstream and other community-based resources
- Working toward helping CoC participants exit PSH through HCV and other available housing options
- Consider how much projects spend to serve and house individuals/families as compared to other projects serving similar populations



Use a Housing First Approach

Prioritize rapid placement and stabilization in permanent housing and does not have service participation requirements or preconditions

- Projects should help individuals and families move quickly into permanent housing
- Measure and reduce the length of time people experience homelessness
- Engage landlords and property owners
- Remove barriers to entry by reviewing project-level eligibility criteria.
- Adopt client-centered service methods



Use a Housing First Approach



Persons experiencing homelessness are allowed entry regardless of income, poor credit history, current or past substance use, history of victimization and criminal record-with the exception of restrictions imposed by federal, state or local law.



Program Participants can not be required to participate in treatment or services to receive assistance.



New Projects

❖ Through reallocation and/or Bonus Funding

- NEW Joint TH and RRH Component
- NEW PSH that meet requirements of DedicatedPLUS
- NEW RRH
- Dedicated HMIS Project
- Bonus=\$_____





New Projects for DV Bonus

❖ Projects dedicated to serving survivors of domestic violence, dating violence, sexual assault or stalking that are defined as homeless in 24 CFR 578.3

- NEW Joint TH and RRH Component
- NEW RRH
- Supportive Services only-Coordinated Entry Project
- Bonus=\$ _____

Up to 10% of PPRN (Preliminary Pro Rata Need) or minimum of \$50,000- whichever is greater





New Projects for DV Bonus

❖ Supportive Services Only-Coordinated Entry

- Implement policies, procedures and practices that equip the CoC's coordinated entry to better meet the needs of domestic violence, sexual assault or stalking





Expansion Project

- ❖ Renewal project can submit a new application to expand existing projects
 - Increase the number of persons served
 - Increase the number of units
 - Increase the services provided to existing program participants
 - Add additional activities to SSO-Coordinated Entry
 - Can use DV bonus to expand a renewal project





Renewal Projects

- Programs currently in operation are eligible for renewal (executed grant agreement no later than 12/31/18)
- Renewal grants requesting rental assistance are permitted to request a per-unit amount less than FMR if the actual rent per unit under lease is less than the FMR (does not apply to leasing projects)
- A renewal project where 100% of beds were CH dedicated, may either become DedicatedPLUS or continue as CH dedicated project



Consolidated Project

- Combine two or more eligible renewal projects (PSH) into one project application
- No more than 4 projects
- Projects being combined during grant consolidation will continue uninterrupted
- Must have the same recipients and be for the same component
- If conditionally awarded, the start date will be the day after the expiration date of the eligible renewal project with the earliest expiration date



DedicatedPLUS Project

- ❖ A permanent supportive housing project where 100% of beds are dedicated to serve individuals/families with disability, including unaccompanied homeless youth, that at intake are:
 - Experiencing chronic homelessness;
 - Residing in transitional housing that will be eliminated & meets definition of chronically homeless at time of entry into TH;
 - Residing in ES or place not meant for human habitation; but the individual or families experiencing chronic homelessness had been admitted and enrolled in PSH within the last year and were unable to maintain a housing placement;



DedicatedPLUS Project

- Residing and has resided in a place not meant for human habitation or ES for at least 12 months in the last 3 years, but has not done so on 4 separate occasions; or
- Receiving assistance through a dept. of Veterans Affairs-funded homeless assistance program and met one of the above criteria at initial intake to the VA's homeless assistance system



Joint TH-RRH

- Combines two existing program components-transitional housing and rapid re-housing-in a single project to serve individuals and families experiencing homelessness
- Crisis housing with financial assistance and wrap around support services to help move participants to permanent housing as quickly as possible
- Stays should be brief and without preconditions



Joint TH-RRH

❖ May be a good fit if:

- Community has a large number of people living in unsheltered locations-can reduce unsheltered homelessness by providing temporary low-barrier housing while helping with quick permanent housing placement
- There is a lack of safe crisis housing for people fleeing DV to access while they are searching for safe, permanent housing
- There is a high rate of unsheltered youth homelessness



Application Review Information

- ❖ Consolidated Application will be assessed on a 200 point scale
 - COC Coordination & Engagement (48 points)
 - Project Ranking, Review & Capacity (29 points)
 - Homeless Management Information System (13 points)
 - Point-In-Time Count (6 points)
 - System Performance (56 points)
 - Performance & Strategic Planning (48 points)



Threshold Requirements

- ❖ Project Eligibility Threshold-Pass/Fail Standard
 - Applicant & sponsor eligibility and capacity (page 33)

- ❖ Project Quality Threshold
 - New PSH or RRH projects must receive 3 out of 4 points available for this project (page 35)
 - New Joint TH and PH-RRH projects must receive 4 out of 6 points available for this project (page 36)
 - New SO-Coordinated Entry projects must receive 2 out of 4 points available for this project (page 37)
 - New HMIS projects must receive 3 out of 4 points available for this project (page 38)



Threshold Requirements

- ❖ Project Renewal Threshold (page 39)
 - Met plans and goals of established in initial application
 - Demonstrated timeliness (reporting, HMIS, spending down funds)
 - Performance in assisting program participants to achieve and maintain independent living
 - Any deficiencies
- See Section V. Eligibility Information beginning page 32 of the NOFA for eligibility and threshold details.



Rank & Review Process

- All projects will be reviewed and ranked for funding
- Projects placed in Tier 1 or Tier 2, with higher scoring projects being placed in Tier 1.
- Tier 1 projects will be conditionally selected from highest scoring CoC to lowest
- Tier 2 projects funding will be determined using the CoC Application score
- Tier 1 is equal to 94% of the CoC's Annual Renewal Demand (ARD) amount approved by HUD
- Tier 2 is the difference between Tier 1 and the ARD plus any amount available for the new project bonus



Rank & Review Process

- Annual Renewal Demand=\$917,957 (estimated)
- 94% of ARD =\$862,879 (estimated)
- Tier 2 =\$55,078+ \$New project bonus=\$
- New Project Bonus=\$



Rank & Review Process

- ❖ Projects scored on overall system performance using HMIS data
- ❖ Projects are scored based on the following:
 1. >85% remain or exit to PH
 2. <20% returns to homelessness within 12 mos. of exit
 3. 5%+ increase in earned income for persons served
 4. 25%+ increase in non-employment income for persons served
 5. >50% of those served had more than 1 disability
 6. >50% entered form place not meant for habitation



Rank & Review Process

❖ Projects are scored based on the following:

7. > 60% participants increased or maintained mainstream benefits
8. Commitment to Housing First Principles
9. Bed/Unit Utilization Rates at or >95%
10. Participation in Coordinated Access/Assessment
11. HMIS Data Quality
12. Financial & Grant Management Performance
13. Cost effectiveness



Timeline

- **July 9, 2018**-Letter of Intent to apply for funding due to OCED
- **August 6, 2018**-Project Applications due to OCED
- **August 9-10, 2018**-Rank & Review Committee meets
- **September 18, 2018**-OCED submission deadline



Questions and Comments

