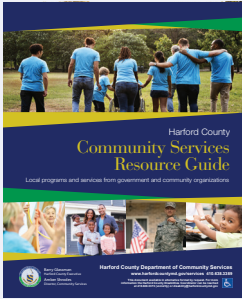


Deadline Extended!

**REACH 50,000 AREA
BUSINESSES AND RESIDENTS**

2020-2021 Harford County Resource Guide



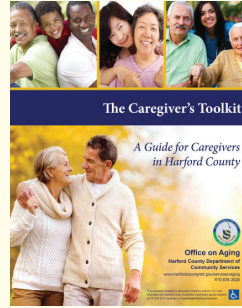
The Harford County Resource Guide is a comprehensive magazine-style directory. This valuable, full-color publication features a wealth of community resources including numerous non-profit and government agencies, resource listings, and up-to-date contact information for everything from area support groups to health care, child-care, women's resources and financial and legal assistance. With a distribution of 15,000 copies throughout the year by government agencies, hospitals, non-profits, businesses, and residents, the Harford County Resource Guide is designed to raise your visibility and drive new business. A digital version of the guide will also be housed on the Harford County Government website.

Resource Guide Deadlines

Reserve Advertising Space	July 17, 2020
Submit Payment and Advertising Materials	July 24, 2020
Publication Date	August 2020

**Advertise
in both
publications
and SAVE!!**

2020-2021 Harford County Caregiver's Toolkit



The Harford County Caregiver's Toolkit is must-have guide that outlines services, resources, and important information for Harford County senior citizens and their caretakers. This full-color, magazine-style publication features a glossy cover and bright, white, easy-to-read pages that will empower readers with answers and practical advice. With a distribution of 5,000 copies throughout the year by government agencies, libraries, senior centers, businesses, and residents, the Harford County Caregiver's Toolkit is designed to raise visibility and drive new business. A digital version of the guide will also be housed on the Harford County Government website.

Caregiver's Toolkit Deadlines

Reserve Advertising Space	October 16, 2020
Submit Payment and Advertising Materials	November 13, 2020
Publication Date	December 2020

Reserve your space in the 2020-2021 Harford County Resource Guide and Caregiver's Toolkit by contacting Theresa Smith at tmsmith@harfordcountymd.gov or 410.638.3389

AD DISPLAY RATES AND SIZES

Ad Size	Dimensions		Resource Guide	Caregivers Toolkit	Combo Rate <i>For both pubs</i>	Combo Savings
	Width	Depth				
Full Page	7.5"	10"	\$1250	\$1000	\$1500	\$750
Full Page Bleed	8.5"	11"	\$1250	\$1000	\$1500	\$750
1/2 Horizontal	7.5"	4.5"	\$750	\$500	\$1000	\$250
1/2 Vertical	3.5"	10"	\$750	\$500	\$1000	\$250
1/4	3.5"	4.5"	\$500	\$300	\$700	\$100

MECHANICAL SPECS

Trim Size	8 1/2" x 11"
Live Area	7 1/2" x 10"
Binding	Saddle Stitched
Print Method	Web offset
Materials	Adobe PDF created with press-quality settings

Submit files to tmsmith@harfordcountymd.gov

BARRY GLASSMAN
Harford County Executive

AMBER SHRODES
Director, Community Services

Harford County Community Services

www.harfordcountymd.gov/services
410.638.3389

