

# Wooden Bead Wreath Ornament



This tutorial comes just in time for Christmas! You can create these as nice additions to your ornament collection. You can use colored beads in green and red if you like and ribbon in any color.

# Supplies Needed:

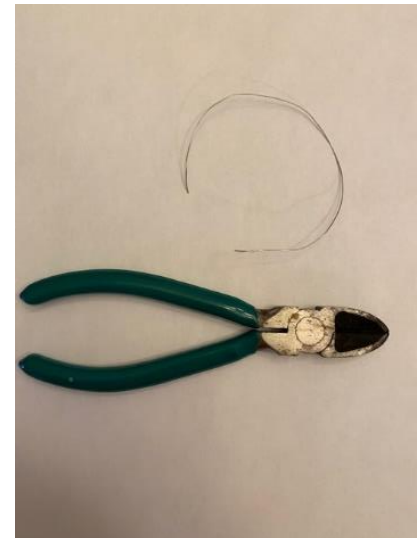
Here are the supplies you will need:

- Natural wooden beads (14mm or 12mm)
- A spool of wire (24 gauge recommended)
- Sharp scissors
- Jewelry pliers or needle nose pliers
- Hot glue gun
- Cord to hang ornament
- Ribbon of choice



## Step 1:

Cut a piece of wire in the size you like.  
It's helpful to wrap it around an object to form a circle.



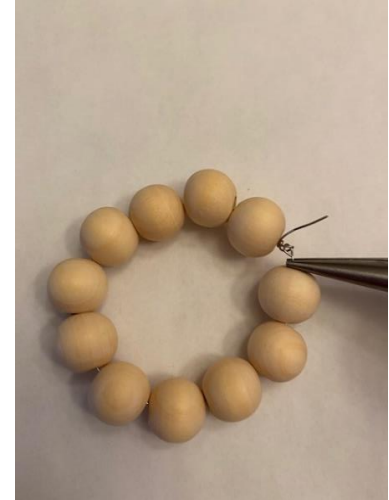
## Step 2:

With the needle nose pliers bend one end of the wire into a small circle.



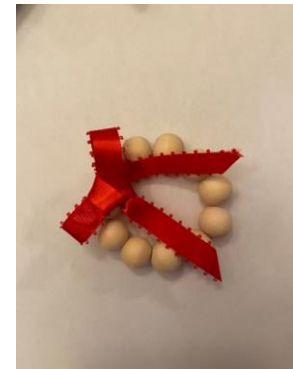
## Step 3:

String your beads onto the hoop. When the desired number of beads are on the hoop use the needle nose pliers to insert the straight end of the wire into the small circle and fold over the wire to close it securely.



## Step 4:

Use a narrow ribbon to make a small bow. Dab a little glue on the back of the bow and hold it in place on the front of the wreath



## Step 5:

Using a length of decorative cord and a yarn needle, string the cord through the wire at the top of the hoop and tie it off to form your hanging loop.

Hang your ornaments and enjoy!

