

Deer Creek Watershed Quick Facts

- 171 sq. miles in size.
- 80% of the watershed lies within Harford County; the remainder is in Baltimore County, MD & York County, PA.
- Named a Maryland State Scenic River in 1973.
- Is a Maryland "Stronghold" Watershed, which means it contains the highest number of rare, threatened, or endangered plant and animal species in the area.
- 15 tributaries to Deer Creek are ranked as high quality streams by the State of Maryland.
- Ranked 3rd in priority in Maryland for aquatic biodiversity conservation.
- Home to several sensitive species - the bog turtle, brook trout & the log perch.
- Home to 3 State Parks totaling over 2,968 acres.
- Designated Harford County's Priority Preservation Area, with over 34,600 acres in agricultural and conservation easements as of 2013.
- Watershed land use is 54% agricultural, 30% forested, 12% residential, minimal commercial.
- 4.6% of the watershed is impervious (at 5% imperviousness, streams start being adversely affected)



Stakeholders

Harford County Department of Planning /Zoning
Harford County Soil Conservation District
Harford County Forestry Board
Maryland Department of Natural Resources
Harford Community College
Harford Land Trust
Deer Creek Watershed Association
Deer Creek Rural Legacy Steering Committee
Agricultural Preservation Advisory Board
Lower Susquehanna Heritage Greenway
Eden Mill Foundation
Izaak Walton League
York Watershed Alliance
Baltimore County
Upper Western Shore Tributary Team



*Harford County Department of
Planning & Zoning*

220 South Main Street
Bel Air, MD 21014

Bryan Lightner
Environmental Planner
410-638-3103 ext. 1386



*Harford County Department of
Planning & Zoning*

DEER CREEK

*Protecting and
Maintaining A Healthy
Watershed*



Interested in low-cost habitat
restoration opportunities?

See how inside this brochure!

Call 410-638-3103

What is a Watershed?

A watershed is the area of land that drains to a particular body of water. Ridgelines define watershed boundaries. All land is part of some watershed.

Why care about your watershed?

A healthy watershed supports a diversity of life, clean water, recreational activities, and economic opportunities. All land uses within a watershed can directly or indirectly affect water quality.



Ongoing Conservation Activities

- Identify programs to assist farmers and other property owners to improve their practices so as to reduce sediment, nutrients, and other pollution throughout the watershed.
- Identify priority sites to increase vegetated buffers along tributary streams.
- Identify key fish blockages for removal.
- Develop a monitoring program to help assess changes in stream health.
- Preserve land through agricultural and conservation easements.



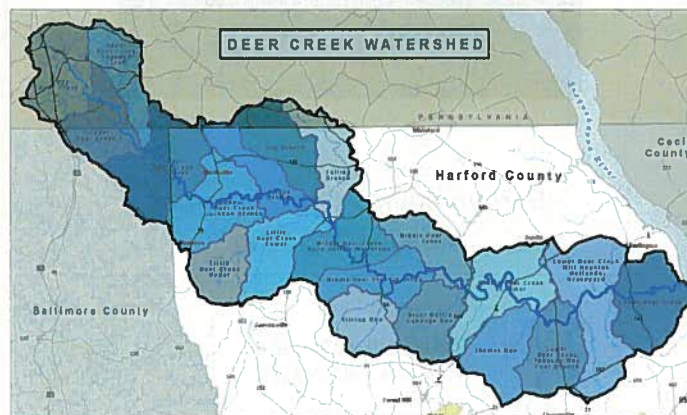
REFORESTATION OPPORTUNITIES

Funding is available to property owners who are interested in expanding stream buffers to help improve water quality and create wildlife habitat on their property.



What You Can Do:

- Plant native plants
- Limit fertilizer use
- Infiltrate storm water



Sensitive Species in Deer Creek

Bog turtle



Map turtle



Brook trout



Log perch



American Chestnut



Glade Fern

