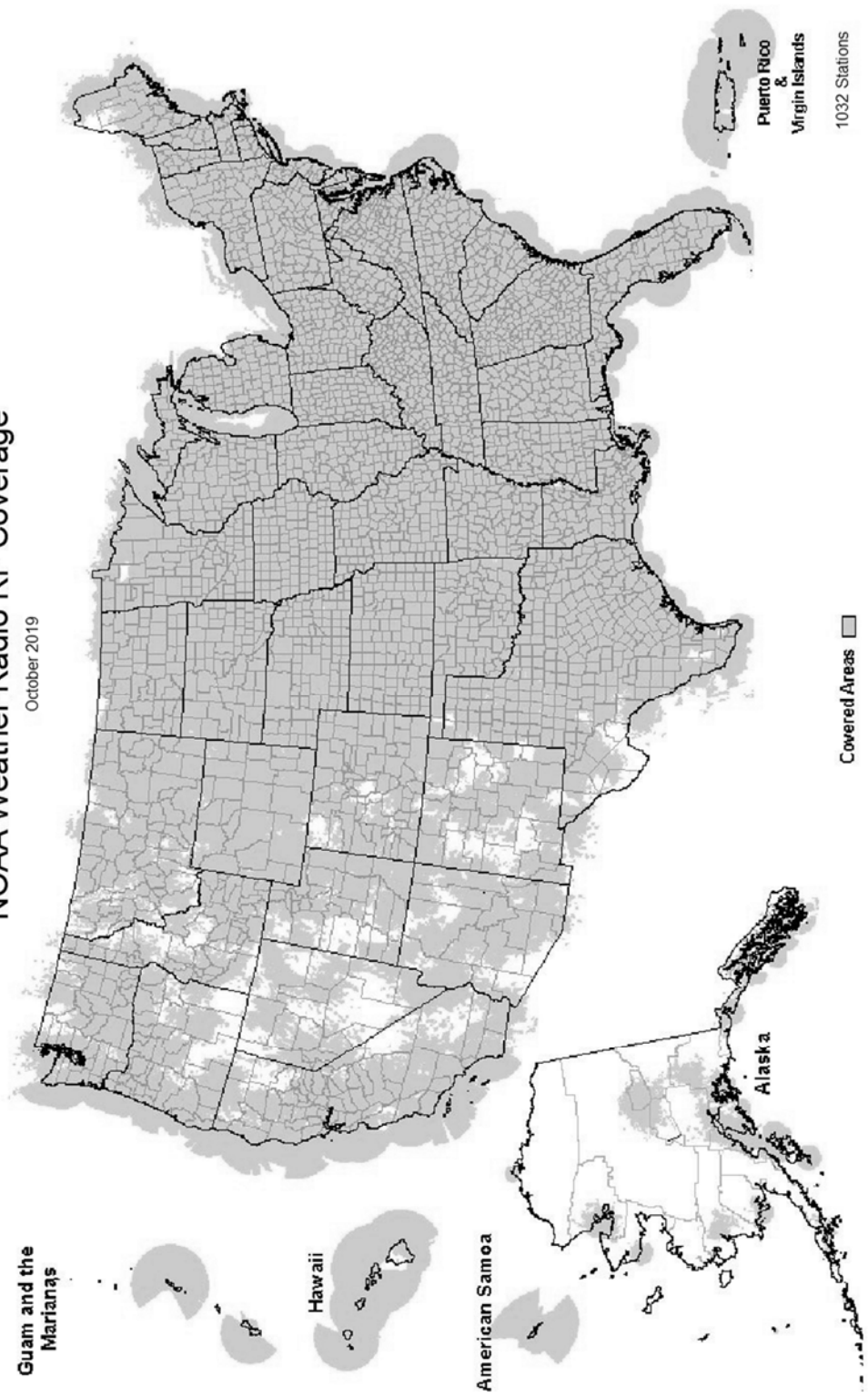
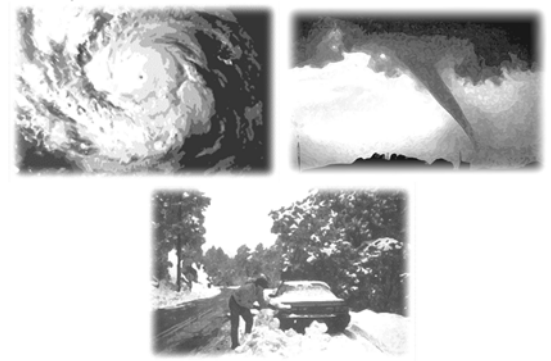


NOAA Weather Radio RF Coverage

October 2019



NOAA/PA 94062  
Rev October 2019



**The Voice of NOAA's National Weather Service**

< Over 1000 Transmitters >

Broadcasting Continuous Weather Information on the Following Frequencies:

- 162.400 MHz
- 162.425 MHz
- 162.450 MHz
- 162.475 MHz
- 162.500 MHz
- 162.525 MHz
- 162.550 MHz

U.S. Department of Commerce  
National Oceanic and Atmospheric Administration  
National Weather Service

<http://www.weather.gov/nwr/>

# NOAA WEATHER RADIO

The Voice of NOAA's National Weather Service

<http://www.weather.gov/nwr>

NOAA Weather Radio is a service of the National Oceanic and Atmospheric Administration (NOAA) of the U.S. Department of Commerce. As the "voice of the National Weather Service," it provides continuous broadcasts (24 hours a day) of the latest weather information from local National Weather Service offices. Weather messages are repeated every 4 to 6 minutes and are routinely updated every 1 to 6 hours or more frequently in rapidly changing local weather or if a nearby natural hazardous or manmade condition exists.



The regular broadcasts are specifically tailored to weather information needs of the people within the service area of the transmitter. For example, in addition to general weather information, stations in coastal areas provide information of interest to mariners. Other specialized information, such as hydrological forecasts and other climate data may be broadcast.

During severe weather, National Weather Service forecasters can interrupt the routine weather broadcasts and insert special warning messages concerning imminent threats to life and property. The forecaster can also add special signals to warnings that trigger "alerting" features of specially equipped receivers. In the simplest case, this signal activates audible or visual alarms, indicating that an emergency condition exists within the broadcast areas of the station being monitored, and alerts the listener to turn up the volume and stay tuned for more information. More sophisticated receivers are automatically turned on and set to an audible volume when an alert is received.

In the most sophisticated alerting system, NOAA Weather Radio Specific Area Message Encoding (SAME), digital coding is employed to activate only those special receivers programmed for specific emergency conditions in specific area, typically a county. SAME can activate specially equipped radio and cable television receivers and provide a short text message that identifies the location and type of emergency. SAME is the primary activator for the FCC Emergency Alert System (EAS).

To program NWR SAME receivers with the proper county(s) and marine area(s) of choice, you need to know the 6-digit SAME code number(s) for that county(s). Once you have your code number(s), follow the manufacturer's directions for programming your NWR SAME receiver. You can obtain your SAME code numbers by dialing:

**888-NWR-SAME (888-697-7263) – Voice & TTY/TTD Accessible**

Under a January 1975 White House policy statement, NOAA Weather Radio was designated the sole Government-operated radio system to provide direct warning into private homes for both

PUERTO RICO  
 Maricao .....162.550  
 San Juan .....162.400

RHODE ISLAND  
 Providence .....162.400

SOUTH CAROLINA  
 Aiken .....162.450  
 Aynor .....162.400  
 Barnwell .....162.500  
 Beaufort .....162.450  
 Charleston .....162.550  
 Cheraw .....162.450  
 Columbia .....162.400  
 Cross .....162.475  
 Florence .....162.550  
 Georgetown .....162.500  
 Greenville .....162.550  
 Jasper County .....162.400  
 Kirksey .....162.425  
 Orangeburg .....162.525  
 Rock Hill .....162.425  
 Sumter .....162.425

SOUTH DAKOTA  
 Aberdeen .....162.475  
 Arlington .....162.525  
 Faith .....162.475  
 Firesteel .....162.425  
 Hot Springs .....162.425  
 Lead .....162.525  
 Lowry .....162.500  
 Mitchell .....162.450  
 Philip .....162.450  
 Pickstown .....162.425  
 Pierre .....162.400  
 Porcupine .....162.500  
 Rapid City .....162.550  
 Reliance .....162.525  
 Sioux Falls .....162.400  
 South Shore .....162.425  
 Wessington .....162.550  
 White River .....162.550

TENNESSEE  
 Bristol .....162.550  
 Centerville .....162.450  
 Chattanooga .....162.550  
 Clarksville .....162.500  
 Clifton .....162.500  
 Cookeville .....162.400  
 Dyersburg .....162.500  
 Hickman .....162.500  
 Jackson .....162.550  
 Knoxville .....162.475  
 La Follette .....162.450  
 Lafayette .....162.525  
 Lawrenceburg .....162.425  
 Lobelville .....162.525  
 Memphis .....162.475  
 Nashville .....162.550  
 Shelbyville .....162.475  
 Spencer .....162.450  
 Vale .....162.450  
 Waverly .....162.400  
 Winchester .....162.525

TEXAS  
 Abilene .....162.400  
 Alpine .....162.550  
 Amarillo .....162.550  
 Austin .....162.400

Bay City .....162.425  
 Beaumont .....162.475  
 Big Spring .....162.475  
 Borger .....162.400  
 Brownsville .....162.550  
 Bryan .....162.550  
 Burkeville .....162.425  
 Carrizo Springs .....162.550  
 Center .....162.525  
 Childress .....162.525  
 Cisco .....162.500  
 Coleman .....162.475  
 Corpus Christi .....162.550  
 Corsicana .....162.525  
 Cumby .....162.500  
 Dallas .....162.400  
 Del Rio .....162.400  
 D'Hanis .....162.525  
 Dickens .....162.500  
 Dilley .....162.500  
 El Paso .....162.475  
 El Paso Spanish .....162.550  
 Fort Worth .....162.550  
 Galveston .....162.550  
 Gilmer .....162.425  
 Gonzales .....162.525  
 Guadalupe Mt Nat'l. Park .....162.525  
 Junction .....162.475  
 Kerrville .....162.450  
 La Grange .....162.500  
 Laredo .....162.550  
 Llano .....162.425  
 Lubbock .....162.400  
 Lufkin .....162.550  
 Marietta .....162.525  
 Miami .....162.450  
 Midland/Odessa .....162.400  
 Milano .....162.525  
 Mineral Wells .....162.525  
 Muenster .....162.425  
 New Taiton .....162.450  
 Onalaska .....162.500  
 Ozona .....162.500  
 Palestine .....162.450  
 Paris .....162.550  
 Pecos .....162.450  
 Perryton .....162.475  
 Pharr .....162.400  
 Pharr Spanish .....162.475  
 Plainview .....162.450  
 Port O'Connor .....162.475  
 Richland Springs .....162.525  
 Richmond .....162.475  
 Rio Grande City .....162.425  
 Riviera .....162.525  
 San Angelo .....162.550  
 San Antonio .....162.550  
 Santa Maria Spanish .....162.450  
 Seguin .....162.475  
 Seminole .....162.425  
 Sherman .....162.475  
 Stephenville .....162.450  
 Summerfield .....162.500  
 Sweetwater .....162.425  
 Texarkana .....162.550  
 Three Rivers .....162.450  
 Throckmorton .....162.425  
 Tomball .....162.400  
 Tyler .....162.475  
 Uvalde .....162.425  
 Victoria .....162.400  
 Waco .....162.475  
 Wichita Falls .....162.475

UTAH  
 Bear Lake .....162.500  
 Castle Dale .....162.500  
 Coalville/ Park City .....162.475  
 Escalante .....162.425  
 Lake Powell .....162.550  
 Logan .....162.400  
 Manti .....162.425  
 Milford/Cedar City .....162.400  
 Moab .....162.475  
 Monticello .....162.450  
 Salt Lake City .....162.550  
 St. George .....162.475  
 Tabiona .....162.550  
 Tooele (South Mountain) .....162.450  
 Tooele (Vernon Hills) .....162.525  
 Vernal .....162.400  
 Wendover .....162.475

VERMONT  
 Burlington .....162.400  
 Castleton .....162.500  
 St. Johnsbury .....162.425  
 Windsor .....162.475

VIRGIN ISLANDS  
 St. Croix .....162.500

VIRGINIA  
 Accomack .....162.525  
 Coveseville .....162.450  
 Fredericksburg .....162.425  
 Heathsville .....162.400  
 Lynchburg .....162.550  
 Manassas .....162.550  
 Norfolk .....162.550  
 Richlands .....162.425  
 Richmond .....162.475  
 Roanoke .....162.475  
 Sand Mtn .....162.450  
 South Boston .....162.525

Beckley .....162.550  
 Charleston .....162.400  
 Clarksburg .....162.550  
 Garfield .....162.500  
 Gilbert .....162.475  
 Greggs Knob .....162.500  
 Hinton .....162.425  
 Montferriele .....162.525  
 Moorefield .....162.400  
 Morgantown .....162.475  
 Sutton .....162.450

WISCONSIN  
 Ashland .....162.525  
 Baraboo .....162.450  
 Black River Falls .....162.500  
 Coloma .....162.400  
 Crandon .....162.450  
 Dubuque .....162.400  
 Fond Du Lac .....162.500  
 Green Bay .....162.550  
 Gresham .....162.500  
 Janesville .....162.425  
 Ladysmith .....162.550  
 Madison .....162.550  
 Menomonie .....162.400  
 Milwaukee .....162.400  
 New London .....162.525  
 Park Falls .....162.500  
 Prairie Du Chien .....162.500  
 Racine .....162.450  
 Rhinelander .....162.400  
 Richland Center .....162.475  
 Sheboygan .....162.525  
 Sister Bay .....162.425  
 Spooner .....162.475  
 Tomah .....162.525  
 Wausau .....162.475  
 Wausaukee .....162.400  
 Winona .....162.425  
 Withee .....162.425

WYOMING  
 Afton .....162.475  
 Casper .....162.400  
 Cheyenne .....162.550  
 Cody .....162.400  
 Dubois .....162.450  
 Elk Plaza .....162.425  
 Evanston .....162.450  
 Gillette .....162.500  
 Glendo .....162.450  
 Grant Village .....162.450  
 Jackson .....162.525  
 Kaycee .....162.550  
 Kemmerer .....162.525  
 Lander .....162.475  
 Newcastle .....162.475  
 Pinedale .....162.500  
 Rawlins .....162.425  
 Rock Springs .....162.550  
 Sheridan .....162.475  
 Thermopolis .....162.500  
 Worland .....162.525

WASHINGTON  
 Astoria .....162.400  
 Capitol Peak .....162.475  
 Cle Elum .....162.400  
 Davis Peak .....162.525  
 Dayton .....162.525  
 Forks .....162.425  
 H Street - Blaine Area .....162.525  
 Neah Bay .....162.550  
 Okanogan .....162.525  
 Plymouth .....162.425  
 Puget Sound Marine .....162.425  
 Randle .....162.425  
 Richland .....162.450  
 Seattle .....162.550  
 Spokane .....162.400  
 Wenatchee .....162.475  
 Yakima .....162.550

WEST VIRGINIA  
 Backbone Mountain .....162.450

The National Weather Service requests your assistance in reporting any outages of NOAA Weather Broadcast Stations.

Please use our Toll Free Number (888) 697-7263 or send an Email to [nwroutage@noaa.gov](mailto:nwroutage@noaa.gov) to report the outage.

Clinton.....	162.500	Norfolk .....	162.550
Columbia.....	162.400	North Platte.....	162.550
Crocker.....	162.500	Omaha.....	162.400
Doniphan .....	162.450	Ord.....	162.525
El Dorado Springs.....	162.475	Oshkosh.....	162.525
Eldon.....	162.550	Scottsbluff.....	162.475
Forland.....	162.400	Shubert.....	162.500
Fredericktown .....	162.500	Sidney.....	162.500
Gainesville.....	162.425	Superior.....	162.525
Hannibal.....	162.475	Trenton.....	162.500
Hermitage.....	162.450	Valentine.....	162.450
Jamestown.....	162.425	Yankton.....	162.500
Joplin.....	162.550		
Kansas City.....	162.550		
La Plata.....	162.525		
Lancaster.....	162.550		
Maryville.....	162.425		
Medill.....	162.450		
Neosho.....	162.450		
Piedmont.....	162.425		
St. Louis.....	162.550		
Summersville.....	162.475		
Trenton.....	162.500		
Wardell.....	162.525		
West Plains.....	162.525		

<b>MONTANA</b>			
Baker.....	162.550		
Belgian Hill.....	162.500		
Billings.....	162.550		
Bozeman.....	162.500		
Broadus.....	162.425		
Browning.....	162.525		
Butte.....	162.550		
Circle.....	162.550		
Dillon.....	162.475		
Ekalaka.....	162.475		
Forsyth.....	162.525		
Glasgow.....	162.400		
Glendive.....	162.475		
Glentana.....	162.525		
Great Falls.....	162.550		
Hardin.....	162.450		
Havre.....	162.400		
Helena.....	162.400		
Jordan.....	162.500		
Kalispell.....	162.550		
Lewistown.....	162.500		
Livingston.....	162.525		
Malta.....	162.475		
Miles City.....	162.400		
Missoula.....	162.400		
Plentywood.....	162.475		
Poplar.....	162.425		
Ryegate.....	162.450		
Scobey.....	162.450		
Wibaux.....	162.500		
Winnett.....	162.400		

<b>NEBRASKA</b>			
Albion.....	162.500		
Bassett.....	162.475		
Beatrice.....	162.450		
Cambridge.....	162.525		
Chadron.....	162.525		
Columbus.....	162.450		
Grand Island.....	162.400		
Holdrege.....	162.475		
Lexington.....	162.425		
Lincoln.....	162.475		
Merna.....	162.500		
Merriman.....	162.400		
Mullen.....	162.425		

<b>NEVADA</b>			
Battle Mtn.....	162.425		
Bullhead City.....	162.500		
Elko.....	162.550		
Ely.....	162.400		
Eureka.....	162.550		
Fernley.....	162.450		
Hawthorne.....	162.475		
Jackpot.....	162.500		
Las Vegas.....	162.550		
Owyhee.....	162.450		
Pahrump.....	162.400		
Reno.....	162.550		
Tonopah.....	162.400		
Winnemucca.....	162.400		

<b>NEW HAMPSHIRE</b>			
Clarksville.....	162.400		
Concord.....	162.400		
Deerfield.....	162.450		
Hanover.....	162.525		
Holderness.....	162.550		
Mt. Washington.....	162.500		
Pack Monadnock.....	162.525		
<b>NEW JERSEY</b>			
Atlantic City.....	162.400		
Hardyston.....	162.500		
Southard.....	162.450		

<b>NEW MEXICO</b>			
Albuquerque.....	162.400		
Artesia.....	162.425		
Carlsbad.....	162.475		
Des Moines.....	162.550		
Farmington.....	162.475		
Hobbs.....	162.400		
Las Cruces.....	162.400		
Portales.....	162.475		
Roswell.....	162.450		
Ruidoso.....	162.550		
Santa Fe.....	162.550		
Silver City.....	162.425		

<b>NEW YORK</b>			
Albany.....	162.550		
Binghamton.....	162.475		
Buffalo.....	162.550		
Call Hill.....	162.425		
Cattaraugus.....	162.425		
Cooperstown.....	162.450		
Elmira.....	162.400		
Frewsburg.....	162.525		
Gore Mtn.....	162.450		
Highland.....	162.475		
Ithaca.....	162.500		
Lyons.....	162.475		
Middleville.....	162.425		
Mt. Washington.....	162.450		
New York City.....	162.550		

Norwich.....	162.525	Toledo.....	162.500
Riverhead.....	162.475	Youngstown.....	162.500
Rochester.....	162.400		
Spencerport.....	162.525		
Stamford.....	162.400		
Syracuse.....	162.550		
Walton.....	162.425		
Watertown.....	162.475		
White Hill.....	162.525		

<b>NORTH CAROLINA</b>			
Asheville.....	162.400		
Buck Mountain.....	162.500		
Cape Hatteras.....	162.475		
Chapel Hill.....	162.550		
Charlotte.....	162.475		
Ellerbe.....	162.400		
Garner.....	162.450		
Henderson.....	162.500		
Linville.....	162.450		
Mamie.....	162.425		
Margarettsville.....	162.450		
Mooreville.....	162.525		
Mount Jefferson.....	162.500		
New Bern.....	162.400		
Robbinsville.....	162.525		
Rocky Mount.....	162.475		
Saint Pauls.....	162.475		
Warsaw.....	162.425		
Windsor.....	162.525		
Winnabow.....	162.550		
Winston-Salem.....	162.400		

<b>NORTH DAKOTA</b>			
Bismarck.....	162.475		
Cavalier.....	162.450		
Dickinson.....	162.400		
Fargo.....	162.475		
Fort Ransom.....	162.525		
Grand Forks.....	162.475		
Jamestown.....	162.550		
Langdon.....	162.500		
Minot.....	162.400		
New Town.....	162.525		
Petersburg.....	162.400		
Rolla.....	162.475		
Scranton.....	162.525		
Sheyenne.....	162.525		
Steele.....	162.400		
Webster.....	162.425		
Williston.....	162.550		
Willow City.....	162.450		

<b>NORTHERN MARIANA ISLANDS</b>			
Saipan.....	162.550		

<b>OHIO</b>			
Akron.....	162.400		
Athens.....	162.425		
Bridgeport.....	162.525		
Carey.....	162.525		
Chillicothe.....	162.500		
Cleveland.....	162.550		
Columbus.....	162.550		
Dayton.....	162.475		
Grafton.....	162.500		
High Hill.....	162.475		
Lima.....	162.400		
Mansfield.....	162.450		
Marietta.....	162.400		
New Philadelphia.....	162.425		
Otway.....	162.525		
Sandusky.....	162.400		

Toledo.....	162.500
Youngstown.....	162.500

<b>OKLAHOMA</b>	
Altus.....	162.425
Antlers.....	162.400
Ardmore.....	162.525
Atoka.....	162.500
Bartlesville.....	162.425
Broken Bow.....	162.450
Chickasha.....	162.450
Clinton.....	162.525
Enid.....	162.475
Grove.....	162.525
Guymon.....	162.500
Lawton.....	162.550
McAlester.....	162.475
Oklahoma City.....	162.400
Oktaha.....	162.525
Ponca City.....	162.450
Stillwater.....	162.500
Tulsa.....	162.550
Wewoka.....	162.550
Woodward.....	162.500

<b>OREGON</b>	
Bend/Redmond.....	162.500
Brookings.....	162.550
Burns Butte.....	162.475
Cape Blanco.....	162.425
Carney Butte.....	162.475
Coos Bay.....	162.400
Eugene.....	162.400
Florence.....	162.500
Fossil.....	162.550
Heppner.....	162.425
John Day.....	162.500
Klamath Falls.....	162.550
Medford.....	162.400
Mt Hebo.....	162.525
Mt. Ashland.....	162.475
Neahkahnie.....	162.425
Newport.....	162.550
Portland.....	162.550
Reedsport.....	162.525
Rolla.....	162.550
Salem.....	162.475
Spout Springs.....	162.400
The Dalles.....	162.400
Tillamook.....	162.475

<b>PENNSYLVANIA</b>	
Allentown.....	162.400
Altoona.....	162.425
Clearfield.....	162.550
Coudersport.....	162.500
Erie.....	162.400
Harrisburg.....	162.550
Hibernia Park.....	162.425
Honesdale.....	162.450
Huntingdon.....	162.525
Johnstown.....	162.400
Meadville.....	162.475
Parker.....	162.425
Philadelphia.....	162.475
Pittsburgh.....	162.550
Reynoldsville.....	162.500
State College.....	162.475
Towanda.....	162.525
Warren.....	162.450
Wellsboro.....	162.475
Wilkes-Barre.....	162.550
Williamsport.....	162.400

natural disasters and nuclear attack. This concept has been expanded to include warnings for all hazardous conditions that pose a threat to life and safety, both at a local and national level. As a result, NOAA Weather Radio is being better integrated with other National Weather Service systems to provide state and local emergency managers and other warning providers better access to local weather forecast offices, allowing hazard warnings of all types to be broadcast on NOAA Weather Radio within seconds

NOAA Weather Radio currently broadcasts from 1032 stations in fifty states, Puerto Rico, the U.S. Virgin Islands, American Samoa, Guam, and Saipan on seven frequencies in the VHF band, ranging from 162.400 to 162.550 megahertz (MHz). These frequencies are outside the normal AM or FM broadcast bands.

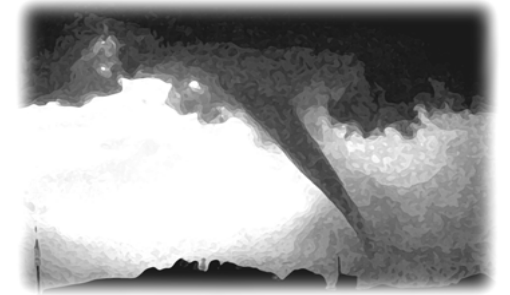
Special radios that receive only NOAA Weather Radio, both with and without special alerting features, are available from numerous manufacturers. In addition, other manufacturers are including NWR capability in a variety of receivers. NOAA Weather Radio capability is currently available on automobile, aircraft, marine, citizens band, and standard AM/FM radios as well as communications receivers, transceivers, scanners, and cable TV.

By nature and design, NOAA Weather Radio coverage is limited to an area within 40 miles of the transmitter. The quality of reception is dictated by transmitter distance, local terrain, and the quality and location of the receiver. In general, those using a high quality receiver on flat terrain or at sea can expect reliable reception beyond 40 miles. Those with standard receivers, surrounded by large buildings in cities and those in mountain valleys may experience little or no reception at considerably less than 40 miles. If possible, a receiver should be tested in the location where it will be used prior to purchase.

NOAA Weather Radio is directly available to a large portion of the U.S. and covers greater than 95 percent of the population.

If you have a question regarding the technical aspects of NOAA Weather Radio such as transmitter location, reception, and characteristics or if you are interested in becoming a partner with the National Weather Service to identify or provide local funding and/or facilities for the installation of a NOAA Weather Radio transmitter, please contact your local National Weather Service Office or send a letter to:

National Weather Service  
 Attn: Dissemination Systems Branch, W/DSB  
 1325 East-West Highway  
 Silver Spring, MD 20910



The following is a listing of operational stations by state. For specific coverage information for your local area please visit our website at:

<http://www.weather.gov/nwr/>

**ALABAMA**

Anniston .....	162.475
Arab .....	162.525
Auburn .....	162.525
Birmingham .....	162.550
Brewton .....	162.475
Columbus .....	162.400
Cullman .....	162.450
Demopolis .....	162.475
Dozier .....	162.550
Florence .....	162.475
Greenville .....	162.425
Henagar .....	162.500
Huntsville .....	162.400
Jackson .....	162.500
Louisville .....	162.475
Mobile .....	162.550
Montgomery .....	162.400
Oneonta .....	162.425
Selma .....	162.450
Tuscaloosa .....	162.400
Winfield .....	162.525

**ALASKA**

Althorp Peak .....	162.425
Anchorage .....	162.550
Bede Mountain .....	162.450
Bethel .....	162.550
Cape Fanshaw .....	162.425
Cape Gull .....	162.500
Cape Hinchinbrook .....	162.525
Cold Bay .....	162.425
Cordova .....	162.400
Craig .....	162.475
Dillingham .....	162.500
Duffield Peninsula .....	162.525
Duke Island .....	162.450
East Point .....	162.500
Fairbanks .....	162.550
Glennallen .....	162.550
Gravina Island .....	162.525
Haines .....	162.400
Homer .....	162.400
Juneau .....	162.550
Ketchikan .....	162.550
Kodiak .....	162.550
Kotzebue .....	162.550
Manleyville .....	162.500
Marmot Island .....	162.500
Middle Cape .....	162.525
Mt. McArthur .....	162.525
Mt. Robert Barron .....	162.450
Nenana .....	162.400
Ninilchik .....	162.550
Nome .....	162.550
Pillar Mtn. ....	162.525
Point Pigot .....	162.450
Potato Point .....	162.425
Raspberry Island .....	162.425
Rugged Island .....	162.425
Saint Paul Island .....	162.525
Sand Point .....	162.550
Seward .....	162.550
Sitka .....	162.550
Sitkinak Dome .....	162.450

Soldotna .....	162.475
Sukkwon Island .....	162.425
Tuklung Mtn. ....	162.425
Unalaska .....	162.550
Utqiagvik .....	162.550
Valdez .....	162.550
Wasilla .....	162.400
Whittier .....	162.475
Wrangell .....	162.400
Yakutat .....	162.400
Zarembo Island .....	162.450

**AMERICAN SAMOA**

Mt. Ololete .....	162.550
Pago Pago .....	162.400

**ARIZONA**

Flagstaff .....	162.400
Globe .....	162.500
Grand Canyon .....	162.475
Greer .....	162.525
Kingman .....	162.425
Lake Havasu .....	162.400
Nogales .....	162.500
Payson Gila County N. ....	162.425
Phoenix .....	162.550
Prescott .....	162.525
Safford .....	162.550
Tucson .....	162.400
Window Rock .....	162.550

**ARKANSAS**

Cherokee Village .....	162.475
El Dorado .....	162.525
Fayetteville .....	162.475
Fort Smith .....	162.550
Fountain Hill .....	162.475
Gurdon .....	162.475
Harrison .....	162.525
High Peak .....	162.425
Jonesboro .....	162.550
Little Rock .....	162.550
Marvell .....	162.525
Mena .....	162.400
Morrilton .....	162.475
Mountain View .....	162.450
Russell .....	162.400
Russellville .....	162.525
Springdale .....	162.400
Star City .....	162.400
Yellville .....	162.500

**CALIFORNIA**

Avalon .....	162.525
Bakersfield .....	162.550
Big Rock Ridge .....	162.500
Bishop .....	162.425
Coachella .....	162.400
Coachella / Spanish .....	162.525
Contra Costa County .....	162.425
Conway Summit .....	162.525
El Paso Mtns .....	162.425
Eureka .....	162.400
Fresno .....	162.400
Grass Valley .....	162.400
Horse Mtn. ....	162.450
Los Angeles .....	162.550
Malibu Marine .....	162.425
Monterey .....	162.550
Monterey Marine .....	162.450
Point Arena .....	162.550
Redding .....	162.550
Sacramento .....	162.550

San Diego .....	162.400
San Diego Marine .....	162.425
San Francisco .....	162.400
San Luis Obispo .....	162.550
San Simeon .....	162.525
Sandberg .....	162.425
Santa Ana .....	162.450
Santa Barbara .....	162.400
Santa Barbara Marine .....	162.475
Sonoma County .....	162.475
Susanville .....	162.500
Ukiah .....	162.525
Victorville .....	162.500
Yosemite .....	162.450
Yuma .....	162.550

**COLORADO**

Alamosa .....	162.475
Anton .....	162.425
Bethune .....	162.525
Boyero .....	162.450
Canon City .....	162.500
Colorado Springs .....	162.475
Deer Trail .....	162.500
Denver .....	162.550
Dillon .....	162.400
Durango .....	162.425
Eagle .....	162.450
Fort Collins/Ault .....	162.450
Fort Morgan .....	162.525
Fowler .....	162.425
Franktown .....	162.450
Glenwood Springs .....	162.500
Grand Junction .....	162.550
Greeley .....	162.400
La Junta .....	162.500
Lamar .....	162.525
Mead/Longmont .....	162.475
Montrose .....	162.450
North Cottonwood .....	162.500
Pueblo .....	162.400
Springfield .....	162.400
Steamboat Springs .....	162.525
Sterling .....	162.400
Walsenburg .....	162.450
Wray .....	162.475

**GEORGIA**

Americus .....	162.425
Ashburn .....	162.450
Athens .....	162.400
Atlanta .....	162.550
Augusta .....	162.550
Baxley .....	162.525
Blakely .....	162.525
Blue Ridge .....	162.475
Brasstown Bald .....	162.500
Brunswick .....	162.425
Buchanan .....	162.425
Chatsworth .....	162.400
Clayton .....	162.450
Cleveland .....	162.525
Eastman .....	162.400
Eatonton .....	162.525
Jesup .....	162.450
La Grange .....	162.450
Macon .....	162.475
Metter .....	162.425
Pelham .....	162.550
Sandersville .....	162.450
Summerville .....	162.450
Thomaston .....	162.500
Toccoa .....	162.425
Valdosta .....	162.500
Washington .....	162.500
Waycross .....	162.475
Waynesboro .....	162.425

**GUAM**

Guam .....	162.400
------------	---------

**HAWAII**

Hawaii Kai .....	162.450
Kauai .....	162.400
Kulani Cone .....	162.550
Maui .....	162.400
North Kohala .....	162.500
Oahu .....	162.550
South Point .....	162.550

**DISTRICT OF COLUMBIA**

Washington DC .....	162.450
---------------------	---------

**FLORIDA**

Belle Glade .....	162.400
Daytona Beach .....	162.400
East Point .....	162.500
Fort Myers .....	162.475
Fort Pierce .....	162.425
Gainesville .....	162.475
Hialeah Spanish .....	162.500
Inverness .....	162.400
Jacksonville .....	162.550
Key West .....	162.400
Lake City .....	162.400
Largo .....	162.450

Melbourne .....	162.550
Miami .....	162.550
Morrison .....	162.550
Naples .....	162.525
Ocala .....	162.525
Orlando .....	162.475
Palatka .....	162.425
Panama City .....	162.550
Pensacola .....	162.400
Princeton .....	162.425
Salem .....	162.425
Sebring .....	162.500
Sneads .....	162.425
Sumterville .....	162.500
Tallahassee .....	162.400
Tampa Bay .....	162.550
Tea Table Key .....	162.450
Venice .....	162.400
West Palm Beach .....	162.475
Westville .....	162.450

**INDIANA**

Angola .....	162.425
Bloomington .....	162.450
Edwardsport .....	162.425
Evansville .....	162.550
Fort Wayne .....	162.550
Georgia .....	162.500
Hebron .....	162.450
Indianapolis .....	162.550
Marion .....	162.450
Michigan City .....	162.500
Monticello/Lafayette .....	162.475
Muncie .....	162.425
New Albany .....	162.475
Newport .....	162.425
North Webster .....	162.500
Putnamville .....	162.400
Richmond .....	162.500
Seymour .....	162.525
South Bend .....	162.400

**INDIANA**

Angola .....	162.425
Bloomington .....	162.450
Edwardsport .....	162.425
Evansville .....	162.550
Fort Wayne .....	162.550
Georgia .....	162.500
Hebron .....	162.450
Indianapolis .....	162.550
Marion .....	162.450
Michigan City .....	162.500
Monticello/Lafayette .....	162.475
Muncie .....	162.425
New Albany .....	162.475
Newport .....	162.425
North Webster .....	162.500
Putnamville .....	162.400
Richmond .....	162.500
Seymour .....	162.525
South Bend .....	162.400

**IOWA**

Burlington .....	162.525
Carroll .....	162.425
Cedar Rapids .....	162.475
Decorah .....	162.525
Delaware .....	162.450
Denison .....	162.550
Des Moines .....	162.550
Essex .....	162.550
Fairfield .....	162.400
Forest City .....	162.500
Fort Dodge .....	162.400
Hancock/Pottawattam .....	162.525
Iowa Falls .....	162.525

Payette .....	162.400
Pocatello .....	162.550
Salmon .....	162.500
Sedgwick Peak .....	162.425
Sun Valley .....	162.450
Twin Falls .....	162.400

**ILLINOIS**

Bloomington .....	162.525
Champaign .....	162.550
Chester .....	162.450
Chicago .....	162.550
Crescent City .....	162.500
Crystal Lake .....	162.500
DeKalb .....	162.550
Dixon .....	162.525
Freeport .....	162.450
Galesburg .....	162.400
Hillsboro .....	162.425
Jacksonville .....	162.525
Jerseyville .....	162.450
Kankakee .....	162.525
Lockport .....	162.425
Macomb .....	162.500
Marion .....	162.425
McLeansboro .....	162.400
Newton .....	162.450
Odell .....	162.450
Paris .....	162.525
Peoria .....	162.475
Plano .....	162.400
Princeton .....	162.425
Quad Cities .....	162.550
Rockford .....	162.475
Salem .....	162.475
Shelbyville .....	162.500
Springfield .....	162.400

**INDIANA**

Angola .....	162.425
Bloomington .....	162.450
Edwardsport .....	162.425
Evansville .....	162.550
Fort Wayne .....	162.550
Georgia .....	162.500
Hebron .....	162.450
Indianapolis .....	162.550
Marion .....	162.450
Michigan City .....	162.500
Monticello/Lafayette .....	162.475
Muncie .....	162.425
New Albany .....	162.475
Newport .....	162.425
North Webster .....	162.500
Putnamville .....	162.400
Richmond .....	162.500
Seymour .....	162.525
South Bend .....	162.400

**IOWA**

Burlington .....	162.525
Carroll .....	162.425
Cedar Rapids .....	162.475
Decorah .....	162.525
Delaware .....	162.450
Denison .....	162.550
Des Moines .....	162.550
Essex .....	162.550
Fairfield .....	162.400
Forest City .....	162.500
Fort Dodge .....	162.400
Hancock/Pottawattam .....	162.525
Iowa Falls .....	162.525

Lake Rathbun .....	162.425
Lenox .....	162.450
Maquoketa .....	162.425
Marshalltown .....	162.500
Milford .....	162.550
Montezuma .....	162.450
Ottumwa .....	162.500
Ringsted .....	162.475
Sanborn .....	162.525
Sioux City .....	162.475
St. Ansgar .....	162.450
Storm Lake .....	162.450
Van Wert .....	162.475
Waterloo .....	162.550

**KANSAS**

Abilene .....	162.525
Beaumont .....	162.500
Belvidere .....	162.525
Blue Rapids .....	162.425
Chanute .....	162.400
Concordia .....	162.550
Dighton .....	162.525
Dodge City .....	162.475
Ellsworth .....	162.400
Gem .....	162.400
Great Bend .....	162.500
Halls Summit .....	162.425
Hays .....	162.450
Kirwin .....	162.500
Lenora .....	162.425
Meade .....	162.425
Parker .....	162.525
Saint Joseph .....	162.400
Sharon .....	162.400
Topeka .....	162.475
Tribune .....	162.550
Ulysses .....	162.450
Wichita .....	162.550

**KENTUCKY**

Ashland .....	162.550
Beattyville .....	162.500
Bowling Green .....	162.400
Burkesville .....	162.475
Campbellsville .....	162.525
Covington .....	162.550
East Madison County .....	162.525
Edmonton .....	162.450
Ekron .....	162.450
Elizabethtown .....	162.550
Frankfort .....	162.500
Frenchburg .....	162.475
Harlan .....	162.4