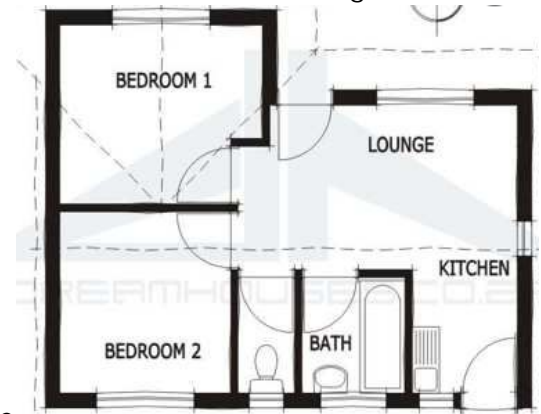


Safety Portfolio

Part 1: Emergency Exit Plan

1. Draw a “blueprint” of your living space. Be sure to include all of the following:
 - a. Every existing floor (livable space)
 - b. Every door
 - c. Every window
 - d. Staircases
 - e. Label the rooms for clarification.****There is no need to draw furniture.



2. Determine **1 exit route for each** of the following scenarios.

****Remember the scenarios are generalized, you may have to adapt according to the specifics of your living space.

NOTE: Different colors could also be used to indicate the exit routes for the scenarios below.



- a. You have just been woken up by the sound of your fire alarm. You approach your bedroom door to exit your room and notice that the fire is blocking your ability to exit. How will you NOW get out?
*Indicate this exit route with a dotted line (.....).
- b. You are watching TV in your family room, when a cooking pot catches on fire. The flames become so out of control you cannot enter the kitchen to leave. How will you get out of your house?
*Indicate this exit route with a dashed line (- - - - -).

3. Determine **2 exit routes** for each of the following scenarios:

- a. You are on the entrance level of your house; a fire has consumed the entire right side of your house. How will you get out? *Indicate these exit routes with starred lines (*****).
- b. You are at the entrance level of your house. A fire has consumed the entire left-hand side of your house. How will you get out?
*Indicate these exit routes with hashtag line (#####).

4. Designated meeting spot :

In a BCR format, please identify a designated meeting spot for you and your family members to meet in the event of an emergency. Once you have determined that spot, please explain the benefits of the designated

spot.

Part 1 Rubric:

| Required Elements | Description | Possible Points | Points Earned |
|-------------------|------------------------------------------------------------------------------------------------------------------------------------------------------------------------------------------|----------------------|---------------|
| Blueprint | -All livable levels of your living space included -All rooms identified by name (bedroom, kitchen, bathroom, etc...) -All details of livable space included (windows, doors, etc.) | | |
| Exit Routes | 6 total -Bedroom scenario (1) -Tv Room scenario (1) -Entry Way Right side scenario (2) -Entry Way Left side scenario (2) | | |
| BCR | -Designated meeting spot clearly explained in BCR -Benefits thoroughly explained | | |
| | | Total points earned: | |

Part 2: Emergency First Aid Kit

Directions: Please include 20 items that are necessary for an emergency kit. The kit can be specific (care, camping, or home) or general (for everyday use, anywhere). For each item included please provide a description (what the item will be used for).

1. What is this kit being created for? Car, House, Camping, Hiking...? Please indicate on the line below:

a. This Kit is created for: _____

| Items in the Kit | Description: What will this item be used for/why is it important? |
|------------------|-------------------------------------------------------------------|
| 1 | |
| 2 | |
| 3 | |
| 4 | |
| 5 | |
| 6 | |
| 7 | |
| 8 | |
| 9 | |
| 10 | |
| 11 | |
| 12 | |
| 13 | |
| 14 | |
| 15 | |
| 16 | |
| 17 | |
| 18 | |
| 19 | |
| 20 | |

Part 2 Rubric:

| Required Elements | Description | Possible Points | Points Earned |
|--------------------------------|--------------------------------------------------------------------------------------------------------------------------------------------------------------|-----------------|---------------|
| First Aid Kit Items | -Minimum of 20 necessary and functional items are identified for first aid kit -All items in the First Aid Kit are appropriate for the purpose of the kit | | |
| Purpose of First Aid Kit Items | -All first aid kit items have a thorough description of: | | |

| | | | |
|--|-----------------------------------------------------------------------------------------|----------------------|--|
| | *How the item will be used *Purpose/Importance of the item being included in the kit | | |
| | | Total points earned: | |

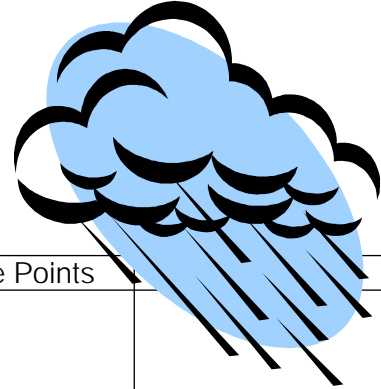
Part 3: Weather Emergency Scrapbook

Extreme weather conditions necessitate knowledge of appropriate safety procedures and preparedness. Your assignment is to make a scrapbook that will tell the story of 4 different weather phenomena and provide tips for being prepared.

DIRECTIONS:

1. Pick 4 weather related phenomena: Hurricane, Floods, Mudslide, Tornado, Heat Wave, Drought, Earthquake, Blizzard, Thunderstorm, and/or Tsunami
2. Collect pictures and a recent news article related to each of the 4 chosen topics.
3. Make a digital scrapbook (PowerPoint, Thinglink, e-book)) including these natural disasters, pictures, and articles.
4. Include a specific page for each topic on Safety tips and preparedness suggestions.

5. Organize the content according to each weather phenomena. Example:
- a. Hurricanes
 - i. Pictures
 - ii. Recent Article (include a URL address)
 - iii. Safety tips
 - iv. Preparedness suggestions



Part 3 RUBRIC:

| Required Elements | Description | Possible Points | |
|-------------------------------|-------------------------------------------------------------------------------------------------------------------------------------------------------------------------------------------------------------------------------------------------------------------------------------------------------------------------------------------------------------------------------------------|-----------------|--|
| Valid/Reliable Resources | 1. Valid/reliable article include for all 4 weather phenomena 2. Article for weather phenomena topic is one of the following: * Recent local news article * Aftermath story * Safety/Preparedness suggestion * Prevention strategies 3. Following information is included for all 4 articles: * Citation including URL information * Brief summary of the article | | |
| Safety Suggestions | 1. Minimum of four safety suggestions are included for all four of the weather phenomena | | |
| Preparedness Suggestions | 1. Minimum of four preparedness suggestions are included for all four of the weather phenomena | | |
| Organization and Presentation | Pictures: <ul style="list-style-type: none"> • Minimum of 2 appropriate pictures included for each weather phenomenon • Content and material organized according to weather phenomenon • No grammatical/ | | |

| | | | |
|--|-----------------|----------------------|--|
| | spelling errors | | |
| | | Total points earned: | |

Part 4: Local Resources Quick Reference Guide

Directions: To compliment your Weather Emergency Scrapbook, you will be creating an awareness tool that will provide information about LOCAL resources to contact for assistance in a weather emergency. This is a ONE page (front and back if necessary) set of condense instructions/info on who, what and where for Harford County local resources. Please use the rubric below to help guide you in your creation.

Part 4 Rubric:

| Required Elements | Description | Total Points |
|------------------------|----------------------------------------------------------------------------------------------------------------------------------------------------------------------------------------------------------------------------------------------------------------------------------------------------------------------------------------------------------------------------------------|--------------|
| WHO- 5 total resources | <ol style="list-style-type: none"> 1. Identify 3 reliable Harford County resources that can be contacted in the case of, or to assist with, emergency 2. Identify 2 STATE or NATIONAL resources that can be contacted in the case of or to assist with emergency <p>* Identify if each resource should be contacted in case of or to assist with emergency</p> | |
| WHAT | <ol style="list-style-type: none"> 1. Provide a thorough description of services provided for each of the 5 resources included in the Quick Reference Guide 2. Each selected resource is relevant and useful in assisting local citizens with emergency management. | |

| | | |
|----------------|-----------------------------------------------------------------------------------------------------------------------------------------------------------------------------------------------------------------------------------|--|
| WHERE | <ol style="list-style-type: none"> For each of the 5 selected resources contact information is listed <ol style="list-style-type: none"> Phone Website URL Address | |
| OVERALL FORMAT | <ol style="list-style-type: none"> The Quick Reference Guide is set up in a way that is easy to read and displays all the necessary elements (who, what, where) No spelling or grammatical errors exist | |