


Female Reproductive System

- 
1. Respect the feelings of others.
 2. Use correct vocabulary (no slang words)
 3. Do not ask questions in order to show off or embarrass others.
 4. If you have a serious question that you do not want to ask in class, write it and put it in the question box.
 5. Do not tell personal stories.
Always say "I know someone who..."
 6. Respect the privacy of everyone in class, including the teacher.
 7. Do not share information (including worksheets) with younger children.
 8. Do not discuss information in a crude or joking manner inside or outside of the classroom.

Family Life Rules



Warm-Up

List 2 changes that occur during puberty for the female?



Objective: Students will be able to label the female anatomy diagram in order to describe the female changes during puberty.

Word Bank

Cervix

Ovaries

Vagina

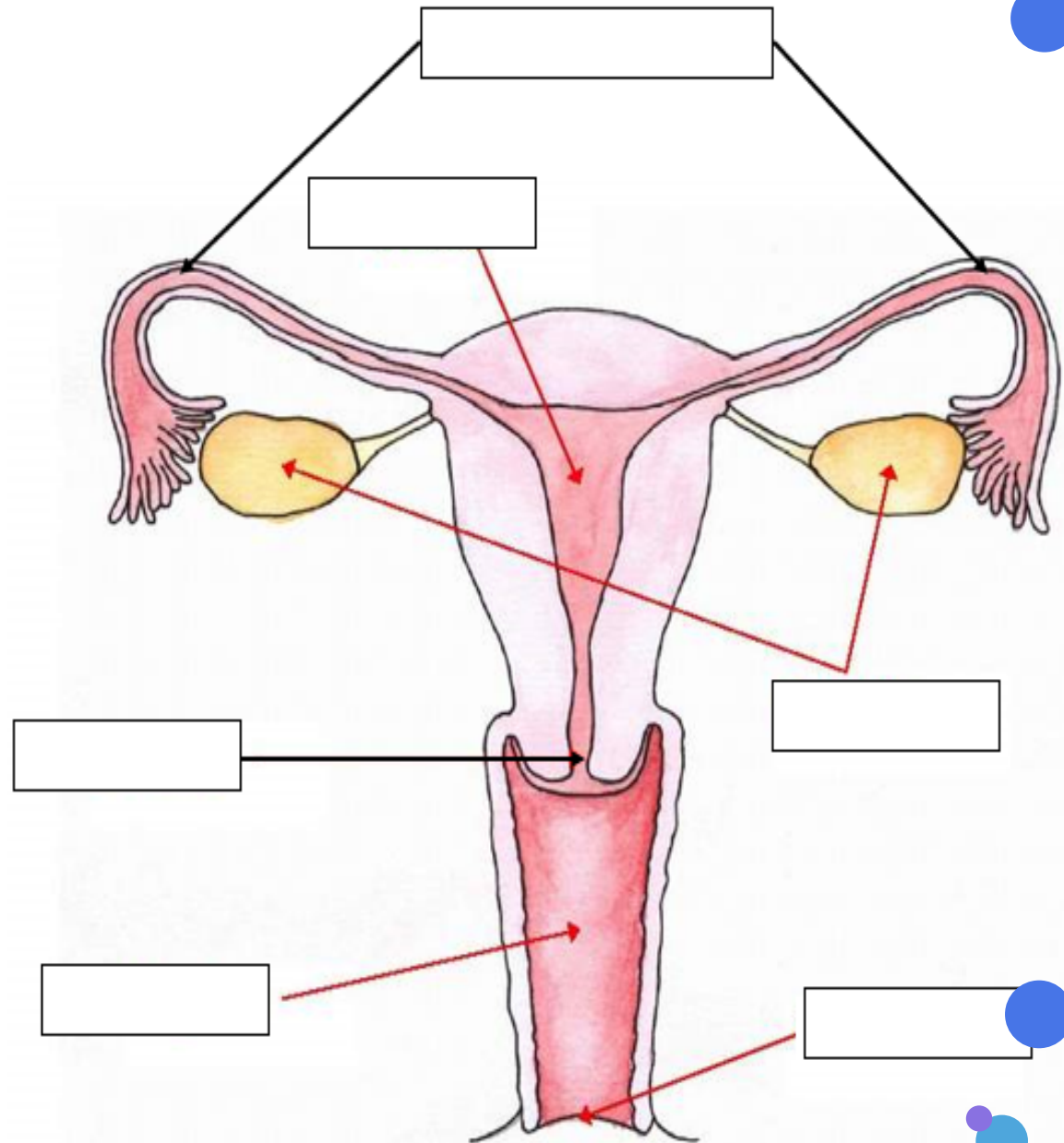
Fallopian Tubes

Uterus

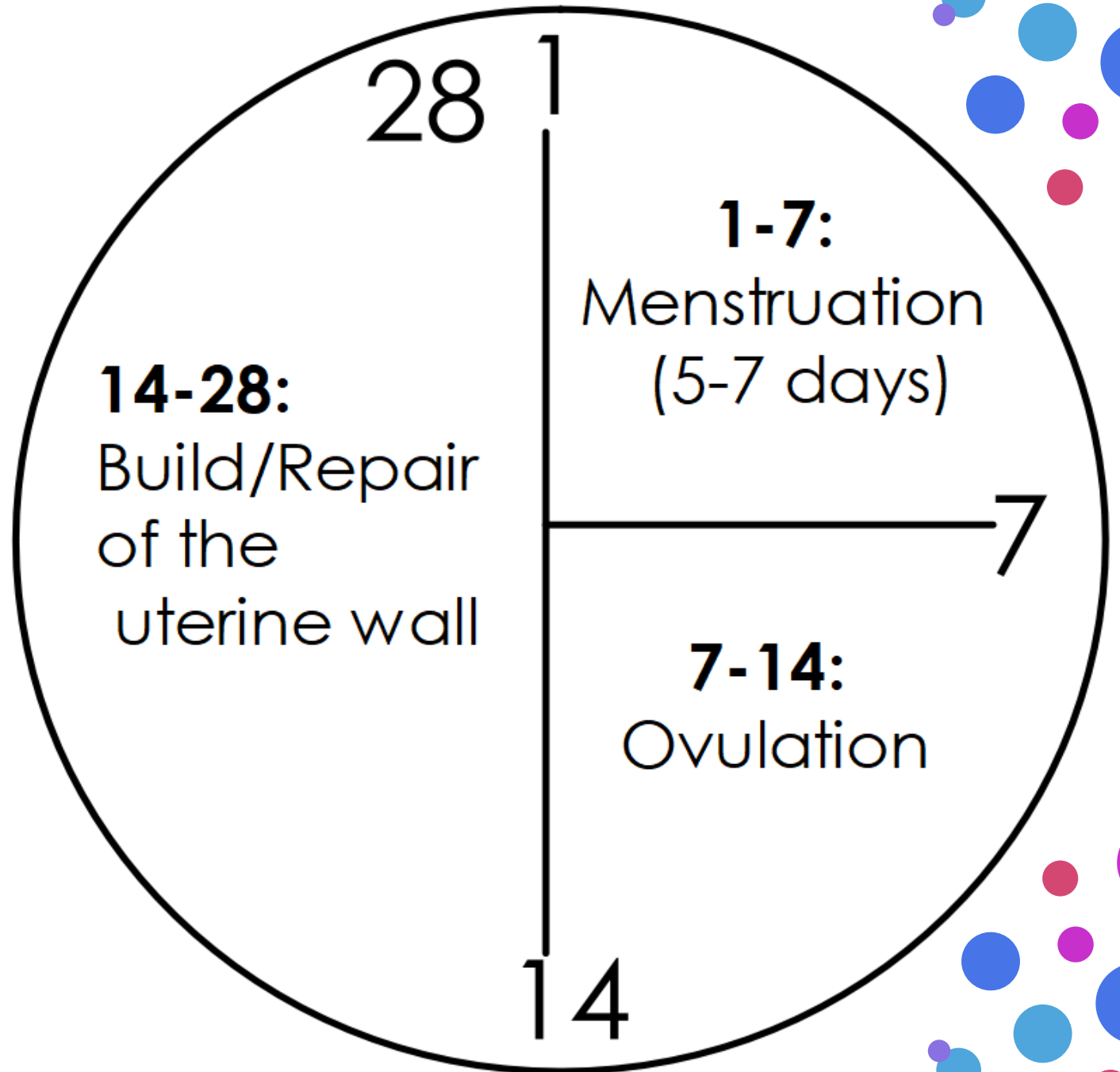
Vulva

FEMALE REPRODUCTIVE SYSTEM

Internal



A woman's
reproductive
system works on
a **28 day cycle**.



Female Reproductive System

External

Word Bank

Urethra

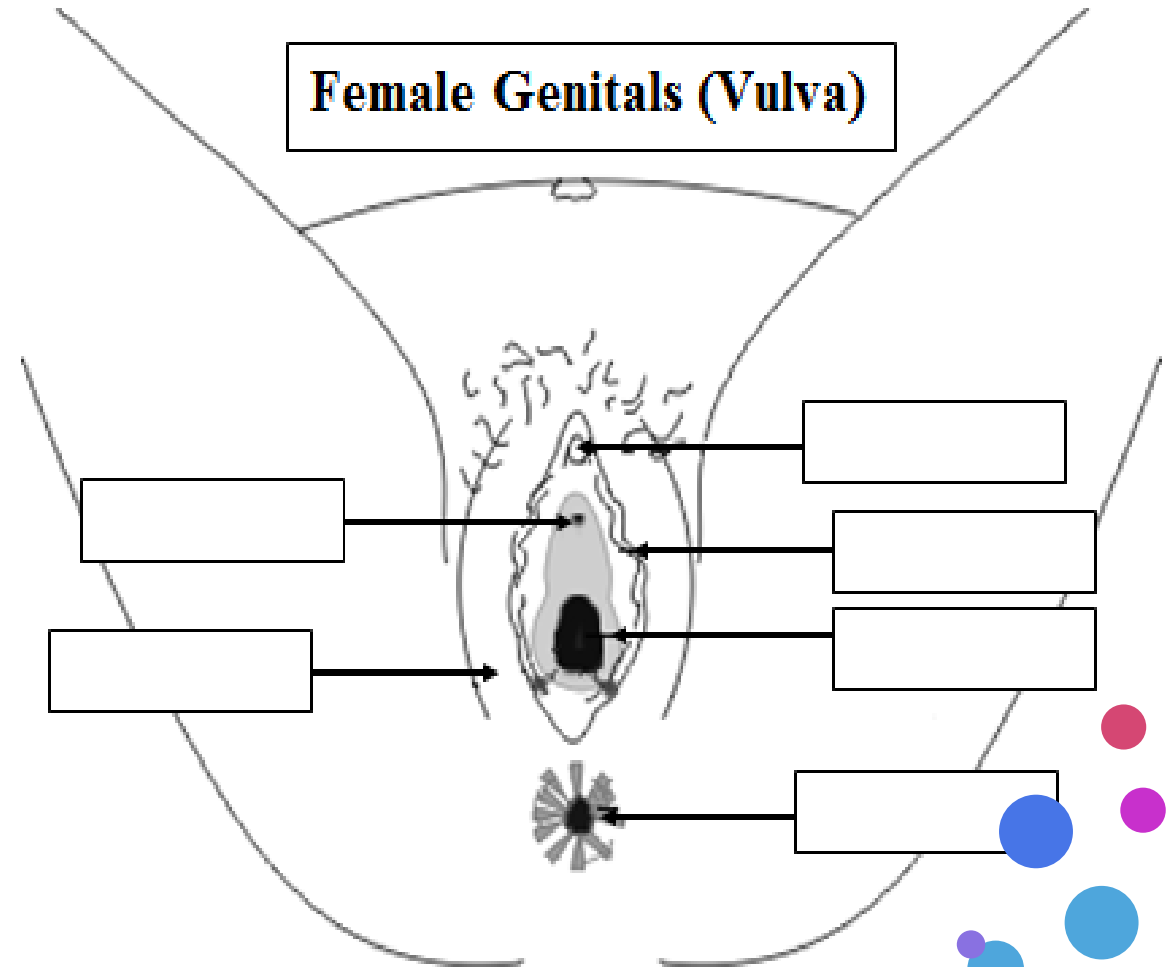
Labia Majora

Clitoris

Labia Minora

Anus

Vagina



WHAT COULD CHANGE THE FUNCTION OF THE FEMALE REPRODUCTIVE SYSTEM?

- Extreme Physical Activity
- Stress
- Hormonal Birth Control
 - Prevents ovulation from occurring
 - Thins the uterine lining
 - Thicken the mucus in the cervix
- Eating Disorders
- Illness

Video: Straight Talk About Puberty for Girls

As you watch,
answer the
questions
associated with
the video.





Test Your Knowledge

Complete the Female
Reproductive System Quiz.



Exit Ticket:

Give me a . and a ?

A statement
about what
I've learned

A question I
still have
about what
I've learned

