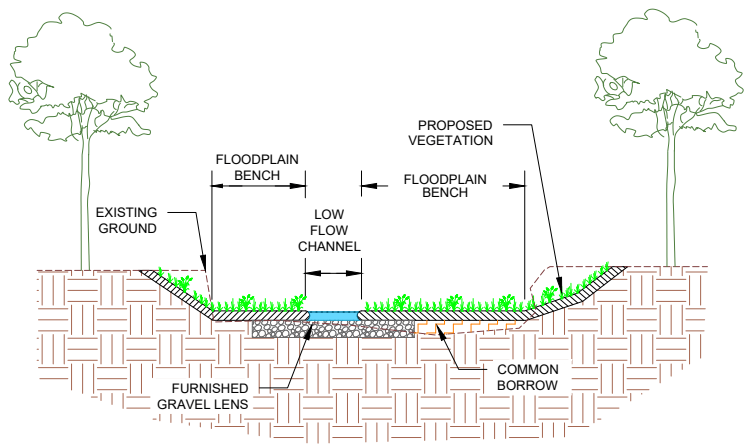


**Bennett Place
Stream Restoration**

**Concept Design Map
Sheet 1 of 4**

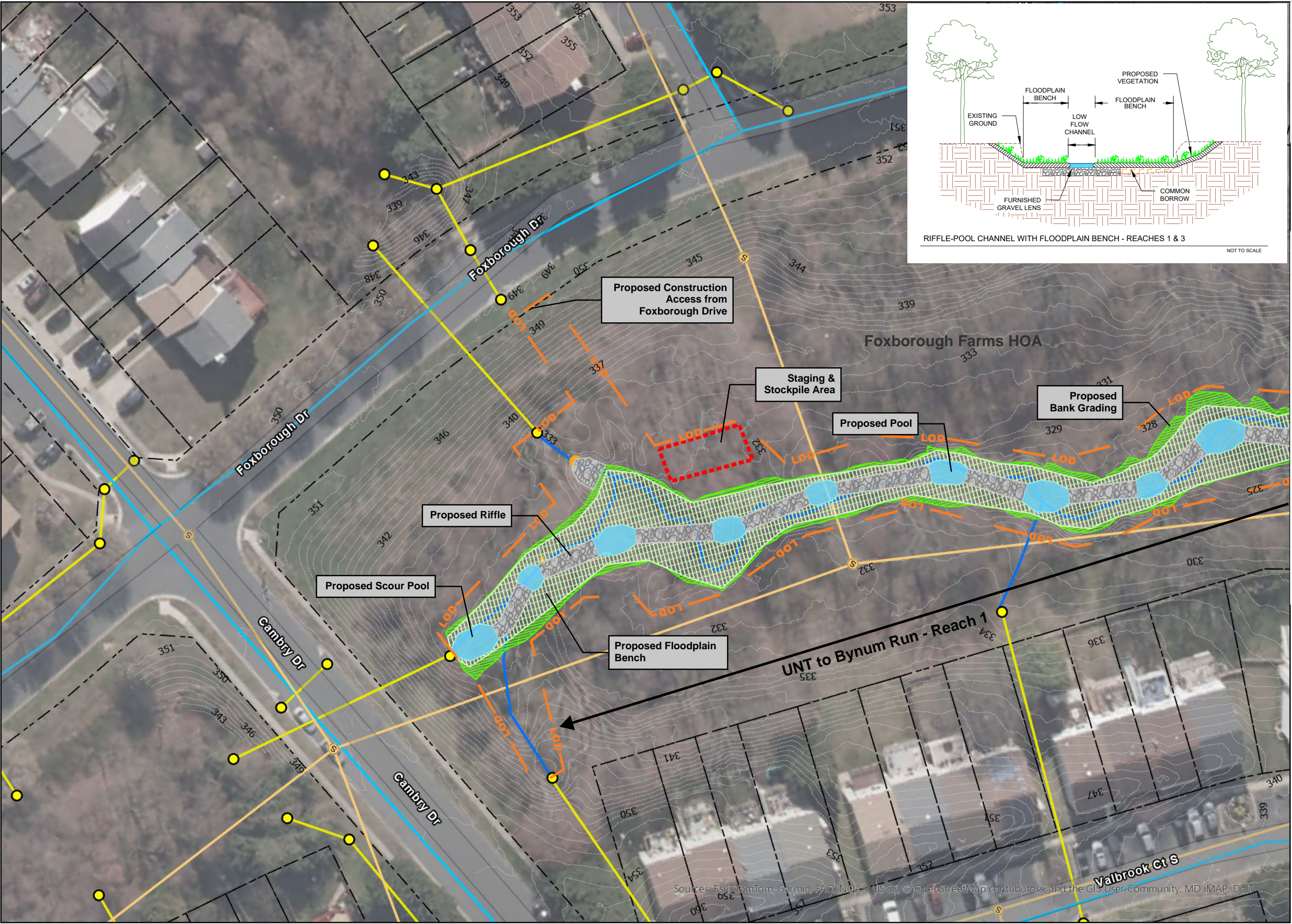
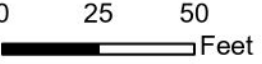


Legend

- Existing Conditions**
- Sewer Manhole
 - Sewer Line
 - Storm Drain
 - Storm Drain Structures
 - Water Line
 - Hydrology
 - Headcuts
 - Property Boundary
 - 1' LiDAR Contours
- Proposed Conditions**
- Proposed Stone
 - Proposed Pools
 - Proposed Floodplain Bench
 - Proposed Vernal Pool
 - Proposed Bank Grading
 - Staging & Stockpile Area
 - Proposed Limit of Disturbance



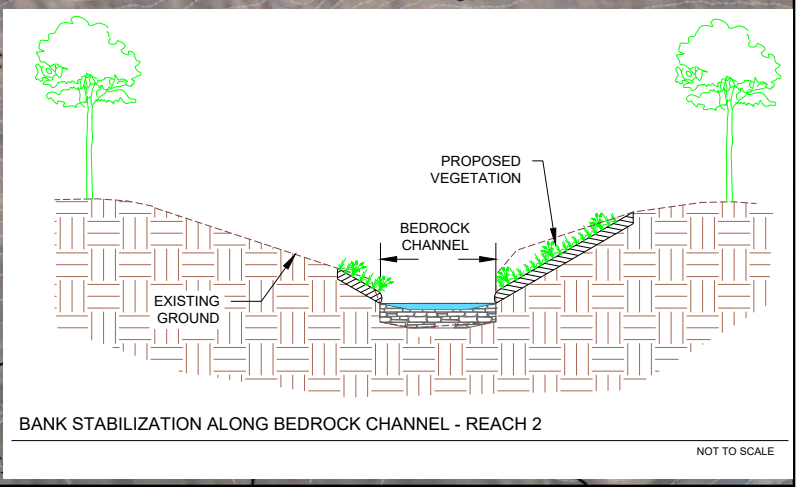
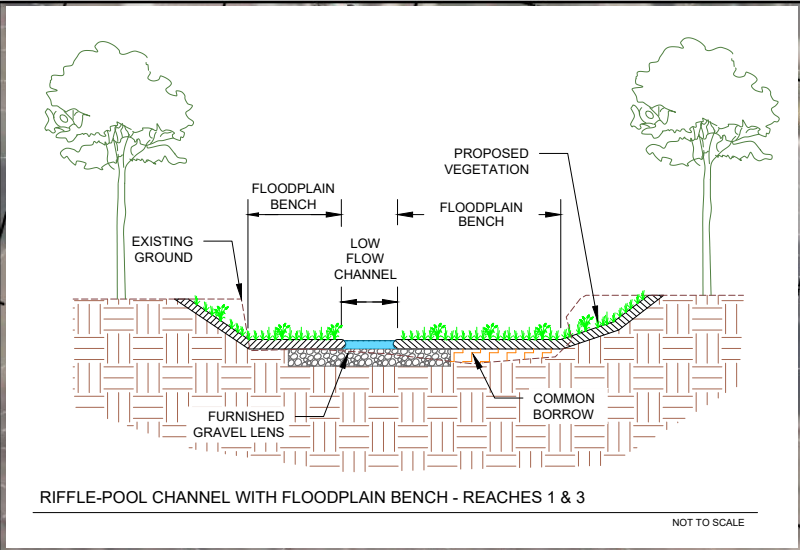
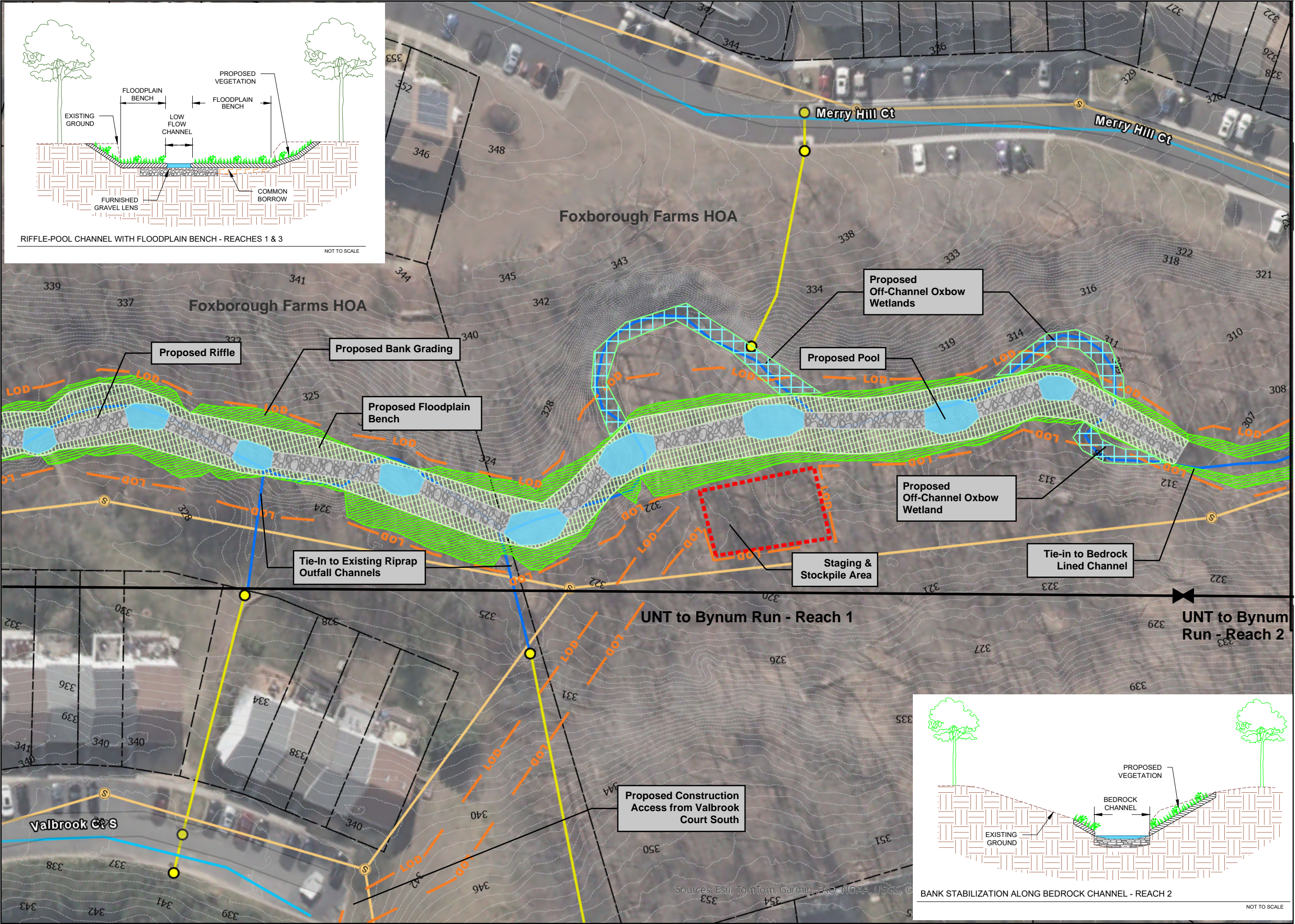
1" = 50 feet



Sources: Esri, TomTom, Garmin, FAO, NOAA, USGS, © OpenStreetMap contributors, and the GIS User Community, MD IMAP, Dolt

**Bennett Place
Stream Restoration**

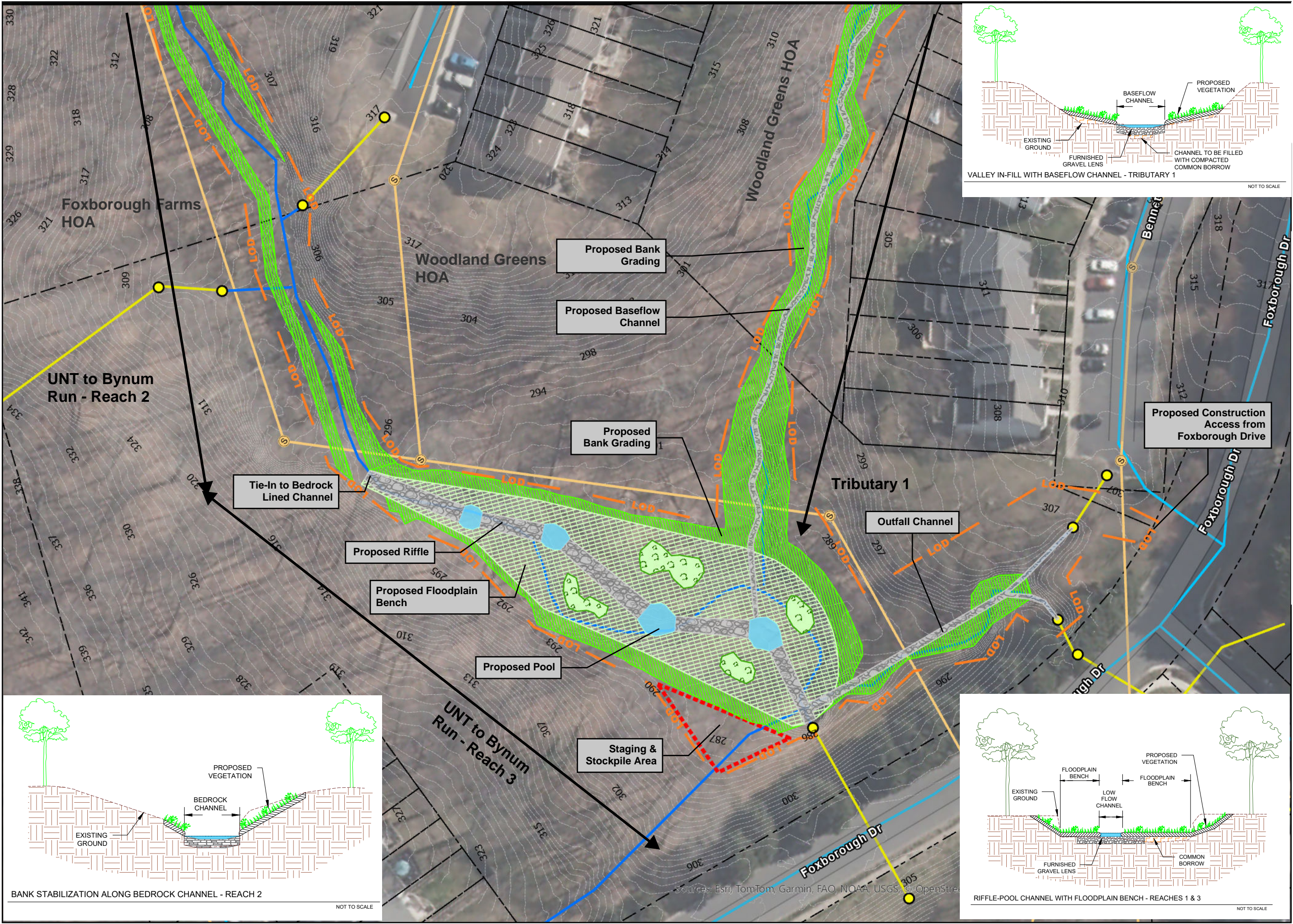
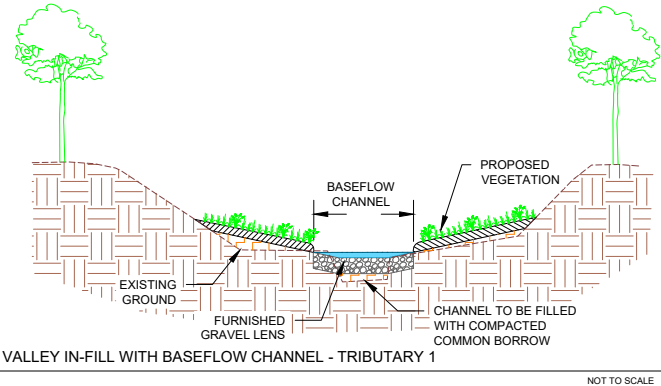
**Concept Design Map
Sheet 2 of 4**



Sources: Esri, TomTom, Garmin, FAO, NOAA, USGS, ©

**Bennett Place
Stream Restoration**

**Concept Design Map
Sheet 3 of 4**

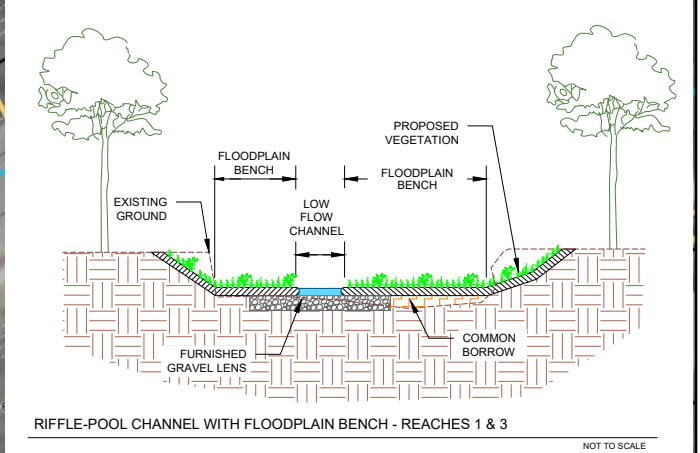
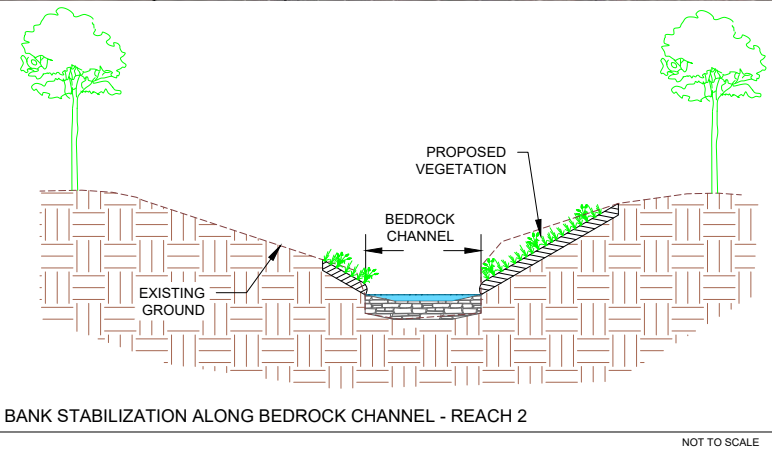


Legend

- Existing Conditions**
- S Sewer Manhole
 - Sewer Line
 - Storm Drain
 - Storm Drain Structures
 - Water Line
 - Hydrology
 - ▲ Headcuts
 - ▭ Property Boundary
 - 1' LiDAR Contours
- Proposed Conditions**
- ▨ Proposed Stone
 - Proposed Pools
 - ▨ Proposed Floodplain Bench
 - Proposed Vernal Pool
 - ▨ Proposed Bank Grading
 - ▨ Staging & Stockpile Area
 - Proposed Limit of Disturbance



1" = 50 feet



Sources: Esri, TomTom, Garmin, FAO, NOAA, USGS, OpenStreetMap

**Bennett Place
Stream Restoration**

**Concept Design Map
Sheet 4 of 4**

Legend

- Existing Conditions**
- Sewer Manhole
 - Sewer Line
 - Storm Drain
 - Storm Drain Structures
 - Water Line
 - Hydrology
 - Headcuts
 - Property Boundary
 - 1' LiDAR Contours
- Proposed Conditions**
- Proposed Stone
 - Proposed Pools
 - Proposed Floodplain Bench
 - Proposed Vernal Pool
 - Proposed Bank Grading
 - Staging & Stockpile Area
 - Proposed Limit of Disturbance



1" = 50 feet

0 25 50
Feet



Sources: Esri, TomTom, Garmin, FAO, NOAA, USGS, © OpenStreetMap contributors and the GIS User Community, MD IMAP, DoIT

